
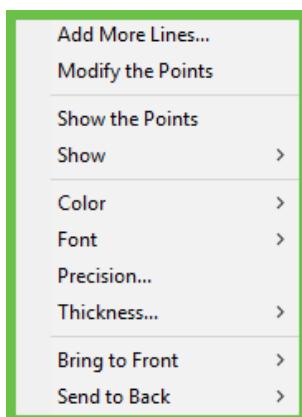


Context Menu – Advanced Line Analysis

The Context Menu allows you to add lines, modify or show points, hide, add or customize the drawn advanced line measurements.

To access the context menu, use the **Select Annotation Object**  and right click on a drawn advanced measure on the image.

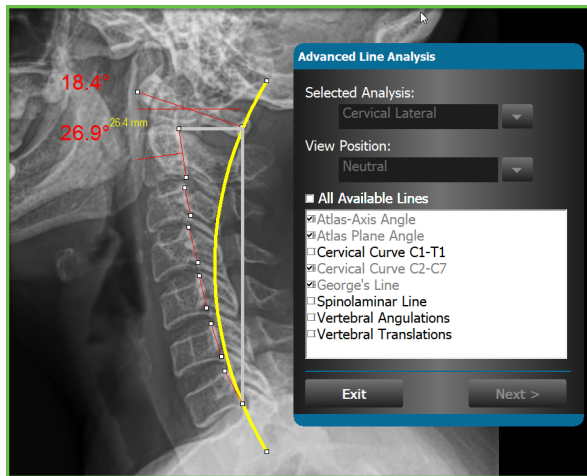


Add More Lines...

This allows you to add additional lines to the image. Existing lines will be checked & grayed out.

Select by checking the box or simply click on the text, then click **Next**.

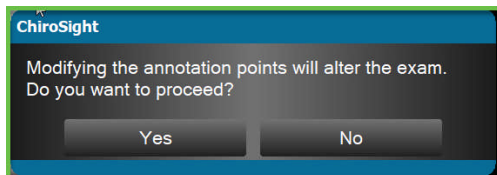
As with all the measure tools, the status bar below the image will inform you where you need to click on the image for the additional line(s) selected.



Modify the Points

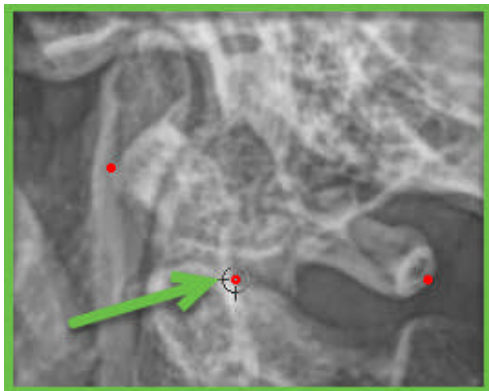
After an advanced line measure is drawn, you can modify where the point(s) are located on the image without having to delete the measure and starting over.

*Note: Modifying an annotation point **will** alter the measure or degree.*



Once you select **Yes** to proceed, the line measures will be temporarily removed on the image.

To move a point, position the mouse on it so the crosshairs appear. Use the left mouse button, click and hold as you drag the point to where you want it, and then release the left mouse button.



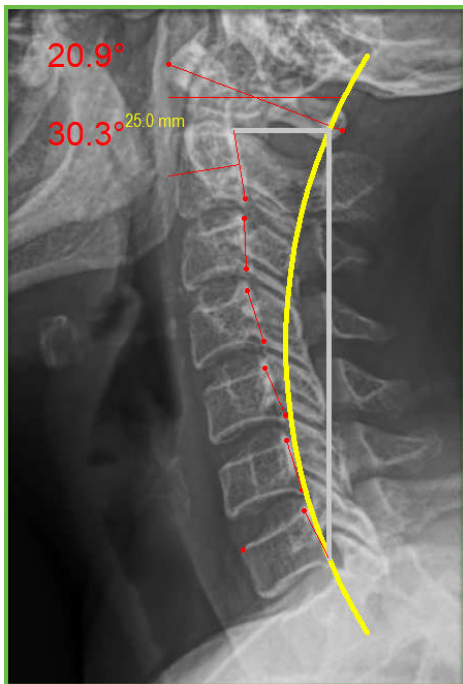
When done modifying the points, right click on any point and select **Show the Lines** for the line measures to reappear.

When you are in the modify mode, most of the **Tools** and all of the **Commands** are inactive. You must **Show the Lines** in order for these to become active.

Show the Points

This will show the selected points on the image with the lines drawn.

Note: While the points are displayed with the lines, the location of the points are not modifiable.

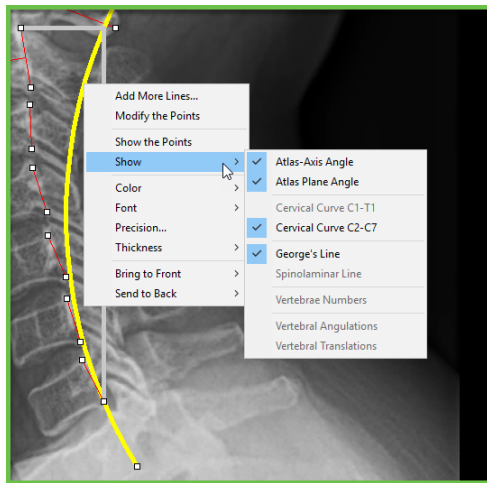


Show

This option allows you to select which drawn measure you wish to display on the image.

The existing drawn measures will be in bold text and check marked. Uncheck the measure you wish to not display on the image. They are deselected, one at a time.

You will not be able to display a measure that is not in bold text. In order to display that measure, you will need to select the **Add More Lines** and draw that measure on the image.



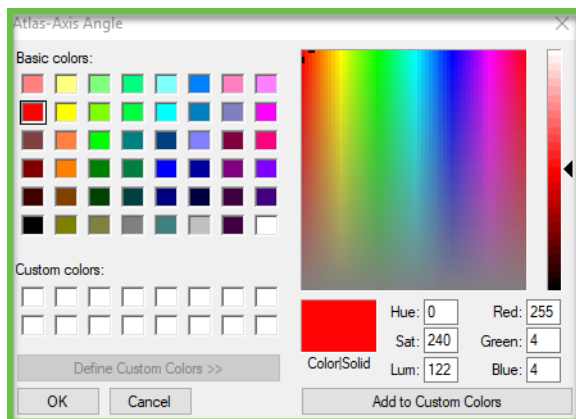
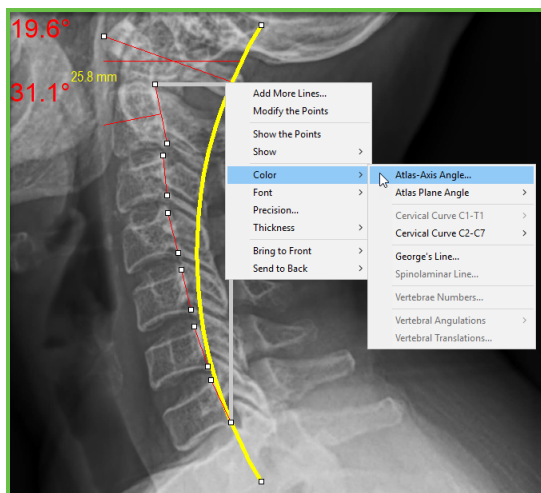
Color, Font, Precision, Thickness

You are able to customize the color, font, precision or thickness of a line or measure once it is drawn on the image. That modification will be carried forward until it is manually changed again.

Color

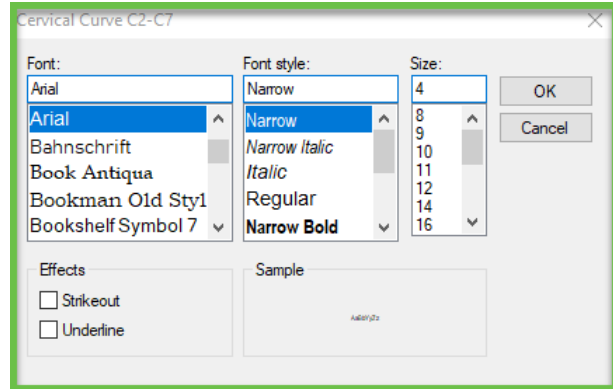
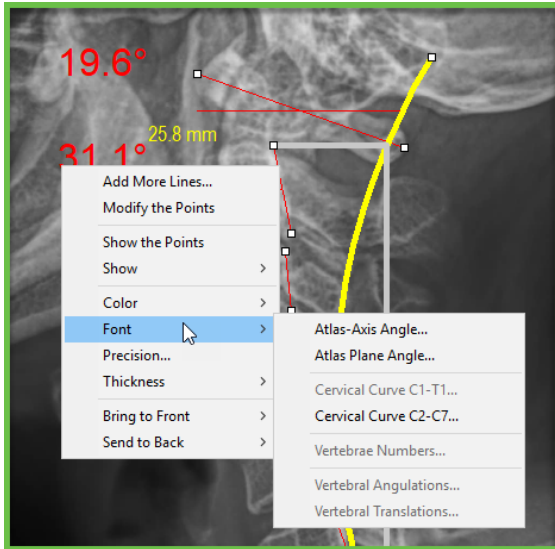
Use this option to customize the color of the selected drawn measure on the image.

The drawn measures will appear in bold text.



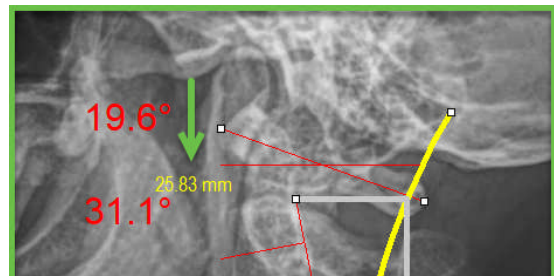
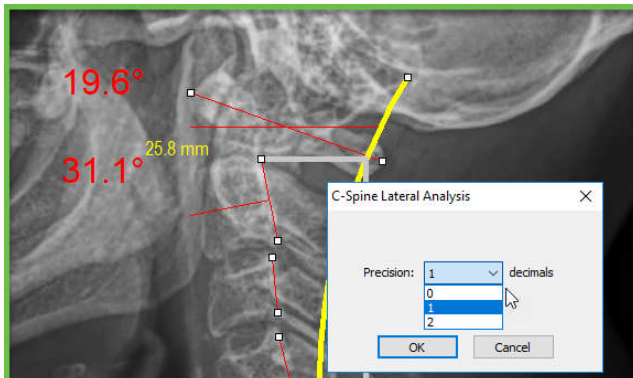
Font

This feature allows you to change the font of the individual length or angle measurement.



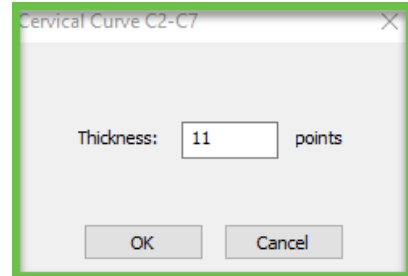
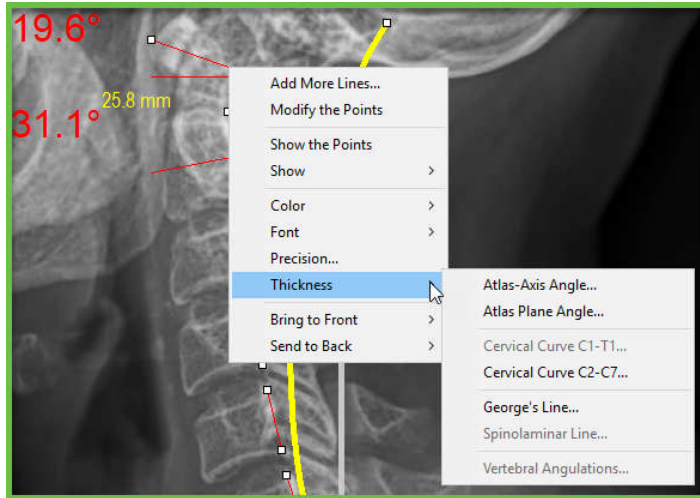
Precision

The precision option allows you to change the number of digits to the right of the decimal for all length measures.



Thickness

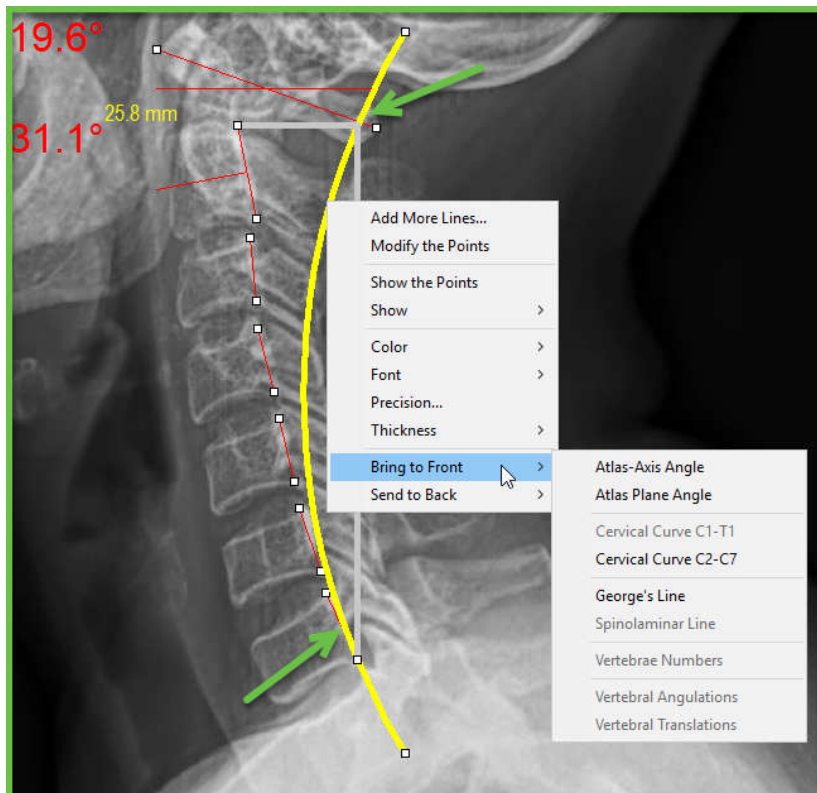
You have the ability to customize the thickness of the individually drawn measurements.

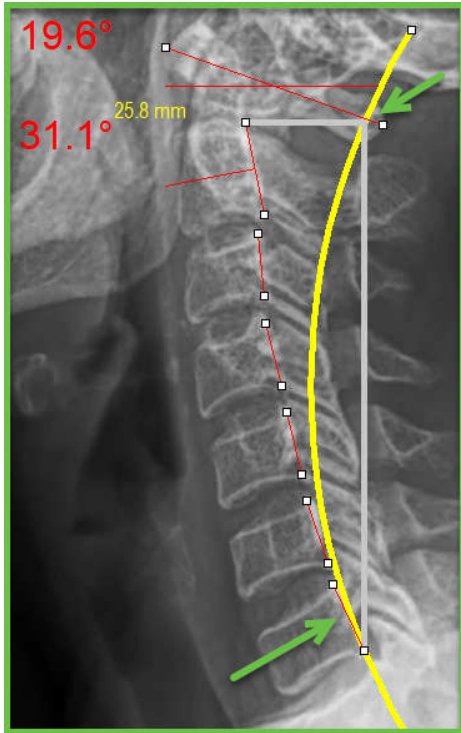


Bring to Front

When you draw multiple measures, should they overlap, the last drawn measure will appear on top of the previously drawn measure.

The **Bring to Front** option allows you to select what measure you wish to appear in front of the other.





Send to Back

This option allows you to select what measure you wish to appear behind another measure, should they overlap.

